



PRODUCT INDEX

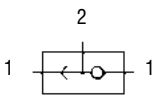
	Series	Page
Automatic Valves	SCS, VNR, VSC and VSO	518
Blocking Valves	VBO and VBU	519
Flow Control Valves	SCU, MCU, SVU, MVU SCO and MCO	520
Flow Control Valves	GSCU, GMCU, GSVU GSCO and GMCO	522
Flow Control Valves	TMCU, TMVU and TMCO	523
Flow Control Valves	28	524
Silencers	2901, 2903, 2921, 2938 2939,SP and RSW	525

Series SCS, VNR, VSC and VSO Automatic Valves

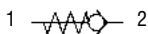
Unidirectional valves VNR
 Quick exhaust valves VSC - VSO
 Shuttle valve SCS
 Connections: M5, 1/8, 1/4, 1/2

ø4mm cartridge

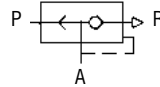
4.
7



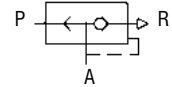
Shuttle Valve
SCS-668-06



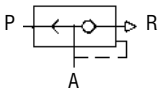
Non Return Valve
VNR-205-M5
VNR-210-1/8
VNR-843-07



Quick Exhaust Valve
VS0-425-M5

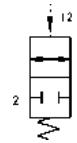
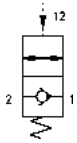


Quick Exhaust Valve
VS0-426-04



Quick Exhaust Valve
VSC 588-1/8
VSC 544-1/4
VSC 522-1/2

Unidirectional and bidirectional 1/8, 1/4, 3/8
Nominal diameters 5,5 - 8 - 11.



Unidirectional	
VBU	1/8
VBU	1/4
VBU	3/8

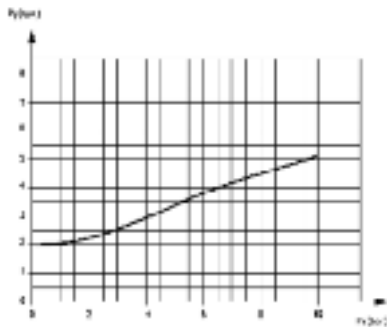
Bidirectional	
VBO	1/8
VBO	1/4
VBO	3/8

4.
7

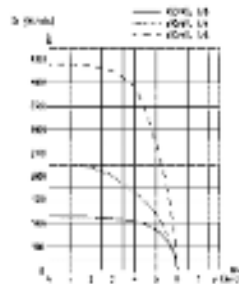
CODING EXAMPLE

VB	U	-	1/8
VB	SERIES: VB	U	VERSIONS: U = unidirectional O = bidirectional
		1/8	CONNECTIONS: 1/8, 1/4, 3/8

Unidirectional and Bidirectional Blocking Valves

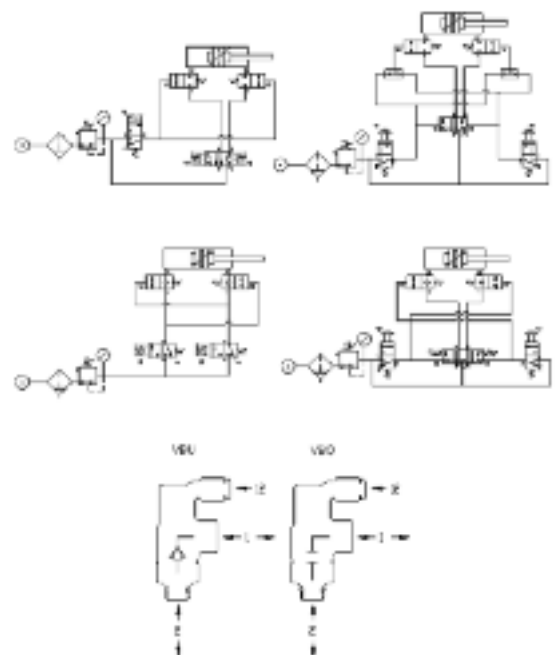


PILOT PRESSURE: This diagram shows the relation between working pressure (Px) and pilot pressure required in order to operate the valve (Py).
The opening pressure of the unidirectional valve is 0,3 bar.



FLOW RATE
Flow Q (NI/min.)
N.B.: Q is determined with an inlet pressure of 6 bar.

Application Schemes

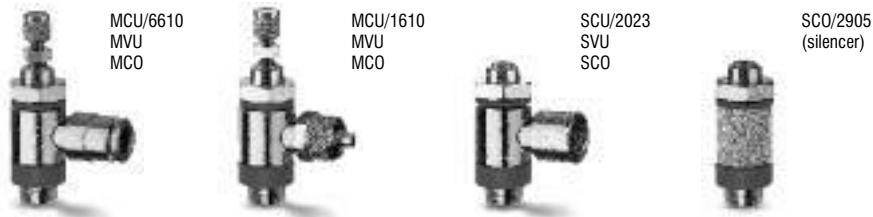


Series SCU, MCU, SVU, MVU, SCO, MCO Flow Control Valves

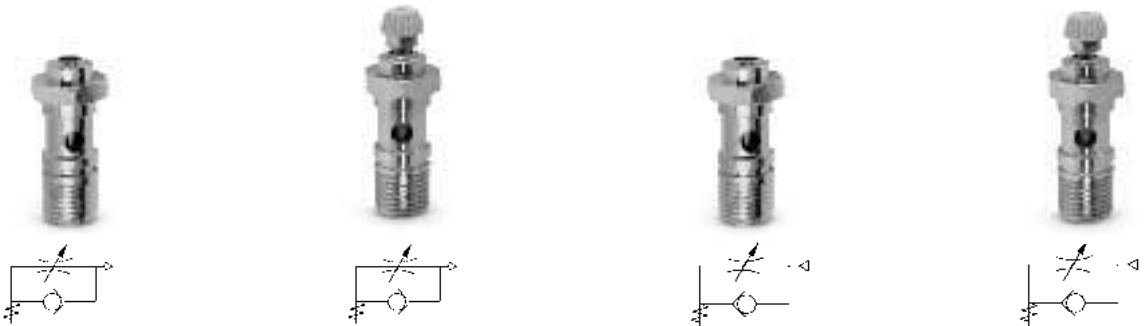
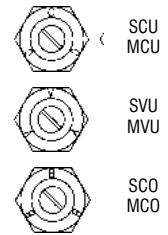
Unidirectional and bidirectional
banjo flow controllers
Connections: M5, 1/8, 1/4, 3/8, 1/2

4.
7

AVAILABLE BANJO FLOW CONTROLLERS



IDENTIFICATION OF DIFFERENT TYPES



Unidirectional Cylinder Mount

SCU 602 - M5

SCU 604 - 1/8

SCU 606 - 1/4

SCU 608 - 3/8

Ring Connector required see page 525

Unidirectional Cylinder Mount

MCU 702 - M5

MCU 704 - 1/8

MCU 706 - 1/4

MCU 708 - 3/8

Ring Connector required see page 525

Unidirectional Valve Mount

SVU 602 - M5

SVU 604 - 1/8

SVU 606 - 1/4

Ring Connector required see page 525

Unidirectional Valve Mount

MVU 702 - M5

MVU 704 - 1/8

MVU 706 - 1/4

Ring Connector required see page 525

Bidirectional

SCO 602 - M5

SCO 604 - 1/8

SCO 606 - 1/4

Ring Connector required see page 525

Bidirectional

MCO 702 - M5

MCO 704 - 1/8

MCO 706 - 1/4

Ring Connector required see page 525

Unidirectional Cylinder Mount

SCU 610 - 1/2

Pre-assembled with ring connector

Unidirectional Cylinder Mount

MCU 710 - 1/2

Pre-assembled with ring connector

AUTOMATIC VALVES

Series SCU, MCU, SVU, MVU, SCO, MCO Flow Control Valves - continued



Unidirectional Valve Mount

SVU 610 - 1/2

Pre-assembled with ring connector



Unidirectional Valve Mount

MVU 710 - 1/2

Pre-assembled with ring connector



Bidirectional

SCO 610 - 1/2

Pre-assembled with ring connector



Bidirectional

MCO 710 - 1/2

Pre-assembled with ring connector

Flow Control Valves with Silencer Series RSW

Part Number

RSW 1/8

RSW 1/4

RSW 1/2



Silencing Bush Series 2905

Part Number

2905 1/8

2905 1/4

2905 3/8



For use with SCO and MCO flow control valves

CODING EXAMPLE

M

CU

7

02

-

M5

M ACTUATION:
M = Manual
S = Screwdriver

CU ASSEMBLY:
CU = on cylinders unidirectional
VU = on valves unidirectional
CO = bidirectional

7 VERSIONS:
6 = needle (screwdriver operated)
7 = needle (manual operated)

02 FLOW CONTROL RANGE:
02 = \varnothing 1.5 max
04 = \varnothing 2 max
06 = \varnothing 4 max
08 = \varnothing 7 max
10 = \varnothing 12 max

M5 CONNECTIONS:
M5, 1/8, 1/4, 3/8, 1/2



Single Banjo Ring Connector

6610 4 - M5

6610 4 - M6•

6610 4 - 1/8

6610 5 - M5

6610 5 - M6•

6610 5 - 1/8

6610 6 - M5

6610 6 - M6•

6610 6 - 1/8

6610 6 - 1/4

6610 8 - 1/8

6610 8 - 1/4

6610 8 - 3/8

6610 10 - 1/4*

6610 10 - 3/8*

6610 12 - 1/2*



Single Banjo Ring Connector

1610 5/3 - M5

1610 5/3 - M6•

1610 5/3 - 1/8

1610 6/4 - M5

1610 6/4 - M6•

1610 6/4 - 1/8

1610 6/4 - 1/4

1610 6/4 - 3/8

1610 8/6 - 1/8

1610 8/6 - 1/4

1610 8/6 - 3/8

1610 10/8 - 1/8*

1610 10/8 - 1/4*

1610 10/8 - 3/8*

1610 10/8 - 1/2*

1610 12/10 - 3/8*

1610 12/10 - 1/2*

1610 15/12.5 - 1/2*



Banjo Ring Connector

2023 M5 - M5

2023 M5 - M6•

2023 1/8 - 1/8

2023 1/4 - 1/4*

2023 3/8 - 3/8*



Single Banjo Ring Connector

1170 6 - 1/8

1170 6 - 1/4

1170 8 - 1/8*

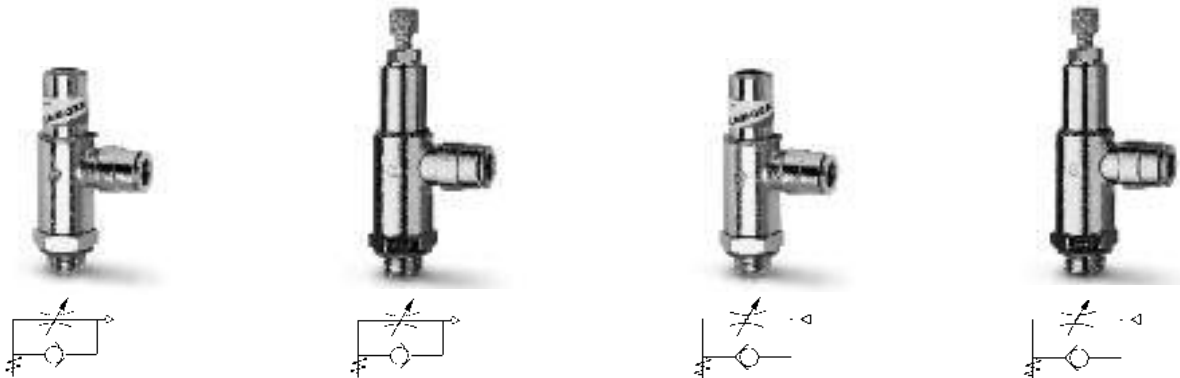
* Banjo ring connectors are only suitable for assemble with type 1635 banjo bolts

• Banjo ring connector required for M5 versions of SCU, MCO, SVU, MVU, SCO and MCO

Series GSCU, GMCU, GSVU, GMVU, GSCO, GMCO Flow Control Valves

Unidirectional and bidirectional M5, 1/8 and 1/4
banjo flow controllers
Nominal diameters 1.5 - 3.5 and 5

4.
7



Unidirectional Cylinder Mounted
GSCU 813-M5-3
GSCU 814-M5-4
GSCU 803-1/8-6
GSCU 804-1/8-8
GSCU 805-1/4-8
GSCU 806-1/4-10
Pre-assembled with ring connector

Unidirectional Cylinder Mounted
GMCU 913-M5-3
GMCU 914-M5-4
GMCU 903-1/8-6
GMCU 904-1/8-8
GMCU 905-1/4-8
GMCU 906-1/4-10
Pre-assembled with ring connector

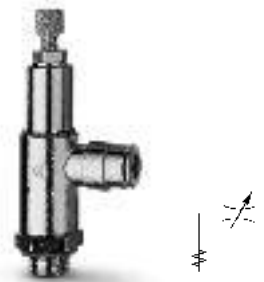
Unidirectional Valve Mounted
GSVU 813-M5-3
GSVU 814-M5-4
GSVU 803-1/8-6
GSVU 804-1/8-8
GSVU 805-1/4-8
GSVU 806-1/4-10
Pre-assembled with ring connector

Unidirectional Valve Mounted
GMVU 913-M5-3
GMVU 914-M5-4
GMVU 903-1/8-6
GMVU 904-1/8-8
GMVU 905-1/4-8
GMVU 906-1/4-10
Pre-assembled with ring connector

Bidirectional
GSCO 813-M5-3
GSCO 814-M5-4
GSCO 803-1/8-6
GSCO 804-1/8-8
GSCO 805-1/4-8
GSCO 806-1/4-10
Pre-assembled with ring connector



Bidirectional
GMCO 913-M5-3
GMCO 914-M5-4
GMCO 903-1/8-6
GMCO 904-1/8-8
GMCO 905-1/4-8
GMCO 906-1/4-10
Pre-assembled with ring connector



CODING EXAMPLE

GM	CU	9	03	-	1/8	-	6
GM ACTUATION: GM = manual GS = screwdriver		9 VERSIONS: 8 = needle (screwdriver operated) 9 = needle (manually operated)			1/8 CONNECTIONS: M5, 1/8, 1/4		
CU ASSEMBLY: CU = on cylinders unidirectional VU = on valves unidirectional CO = bidirectional		03 FLOW CONTROL RANGE: size ø tube 13 = 1.5 3 14 = 1.5 4 03 = 3.5 6 04 = 3.5 8 05 = 5 8 06 = 5 10			6 Ø TUBE: 3, 4, 6, 8, 10		

AUTOMATIC VALVES

Series TMCU – TMVU – TMCO Flow control valves

Unidirectional and bidirectional 1/8, 1/4, 3/8, 1/2 Banjo flow controllers
Nominal diameters Ø 2 - 3,8 - 5,8 - 8 mm



Part Number	A	B
TMCU 972-1/8-4	1/8	4
TMCU 974-1/8-6	1/8	6
TMCU 974-1/4-6	1/4	6
TMCU 976-1/4-8	1/4	8
TMCU 976-3/8-8	3/8	8
TMCU 978-3/8-10	3/8	10
TMCU 978-1/2-10	1/2	10
TMCU 978-1/2-12	1/2	12

Part Number	A	B
TMVU 972-1/8-4	1/8	4
TMVU 974-1/8-6	1/8	6
TMVU 974-1/4-6	1/4	6
TMVU 976-1/4-8	1/4	8
TMVU 976-3/8-8	3/8	8
TMVU 978-3/8-10	3/8	10
TMVU 978-1/2-10	1/2	10
TMVU 978-1/2-12	1/2	12

Part Number	A	B
TMCO 972-1/8-4	1/8	4
TMCO 974-1/8-6	1/8	6
TMCO 974-1/4-6	1/4	6
TMCO 976-1/4-8	1/4	8
TMCO 976-3/8-8	3/8	8
TMCO 978-3/8-10	3/8	10
TMCO 978-1/2-10	1/2	10
TMCO 978-1/2-12	1/2	12

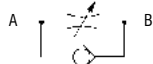
CODING EXAMPLE

TM	CU	9	74	-	1/8	-	6
TM	ACTUATION: TM = manual	9	VERSIONS: 9 = needle (manually operated)		1/8	CONNECTIONS: 1/8, 1/4, 3/8, 1/2	
CU	ASSEMBLY: CU = on cylinders unidirectional VU = on valves unidirectional CO = bidirectional	74	FLOW CONTROL RANGE: size ø tube 72 = 2 4 74 = 3.8 6 76 = 5.8 8 78 = 8 10-12		6	Ø TUBE: 4, 6, 8, 10, 12	

Series RFU, RFO in Line Flow Control Valves

Panel or wall-mounted flow controllers
Unidirectional RFU and bidirectional RFO Connections: M5, 1/8, 1/4
Nominal diameter: M5 = 1.5, 1/8 = 2 and 3mm, 1/4 = 4 and 6mm

Unidirectional	Thread
RFU 452	M5
RFU 482	1/8
RFU 483	1/8
RFU 444	1/4
RFU 446	1/4
RFU 429	1/2



Bidirectional	Thread
RFO 352	M5
RFO 382	1/8
RFO 383	1/8
RFO 344	1/4
RFO 346	1/4



CODING EXAMPLE

RF	U4	8	2
RF	SERIES: RF	8	CONNECTIONS: 8 = 1/8, 5 = M5, 4 = 1/4
U4	FUNCTION: U4 = unidirectional O3 = bidirectional	2	FLOW CONTROL RANGE: 2 = ø2 max 4 = ø4 max 3 = ø3 max 6 = ø6 max

Series 28 Flow Control Valves

Connections: 1/8, 1/4, 3/8, 1/2



A  B

In Line	
2810	1/8
2810	1/4
2810	3/8
2810	1/2



A  B

In Line	
2820	1/8
2820	1/4
2820	3/8
2820	1/2



A  B

In Line	
2830	1/8
2830	1/4
2830	3/8
2830	1/2



A  B

Panel Mounted	
2819	1/8
2819	1/4

4.
7



A  B

Panel Mounted	
2829	1/8
2829	1/4



A  B

Panel Mounted	
2839	1/8
2839	1/4
2839	3/8
2839	1/2

AUTOMATIC VALVES

Series 2901, 2903, 2921, 2931, 2938, 2939, SP, RSW Silencers

Connections: M5, 1/8, 1/4, 3/8, 1/2, 3/4, 1



Part Number	Flow Rate Nl/min	Noise db (A)
2901 1/8	700	75
2901 1/4 - 17	1000	78
2901 1/4 - 22	1600	92
2901 3/8	1500	76
2901 1/2	3400	86
2901 3/4	4100	87
2901 1	7600	88

Part Number	Flow Rate Nl/min	Noise db (A)
2903 1/8	700	74

Part Number	Flow Rate Nl/min	Noise db (A)
2921 1/8	1550	78
2921 1/4	2400	79
2921 3/8	4800	84
2921 1/2	6800	84
2921 3/4	12700	78
2921 1	>15000	80

4.
7



Part Number	Flow Rate Nl/min	Noise db (A)
2931 M5	450	69
2931 M7	1130	76
2931 1/8	1819	83
2931 1/4	2675	85
2931 3/8	4863	83
2931 1/2	7085	84
2931 3/4	12733	78
2931 1	>15000	82

Part Number	Flow Rate Nl/min	Noise db (A)
2938 M5	546	67
2938 1/8	1441	65
2938 1/4	2752	79
2938 3/8	4735	73
2938 1/2	8534	86

Part Number	Flow Rate Nl/min	Noise db (A)
2939 4	335	80
2939 6	632	79
2939 8	1229	89
2939 10	2650	87



Part Number
SP 1/8
SP 1/4
SP 3/8
SP 1/2

Part Number	Flow Rate Nl/min
RSW 1/8	410
RSW 1/4	650
RSW 1/2	1590