

# EXCAVATOR BUCKETS AND GROUND ENGAGING TOOLS FOR KOMATSU EXCAVATORS



# Designed for Efficiency and Cost Reduction

Hensley is proud to offer a complete line of construction buckets for Komatsu excavators. Our buckets are designed to work in various applications and digging conditions to suit your needs.

Our TL buckets feature a flatter floor design for general contractor use while our dual radius designed HP series buckets are for more highly abrasive and prying applications.

Standard and high capacity buckets are available in both styles and can be equipped with various tooth arrangements. Vertical shrouds, strike-off and sidecutter assemblies and other options are available.

For more information contact your local Komatsu dealer.



Speciality  
Buckets



Box Ripper  
Added To Bucket



Bucket Protection  
& Accessories



Kmax™ G.E.T.  
Systems

**Custom HPS  
Bucket Shown**

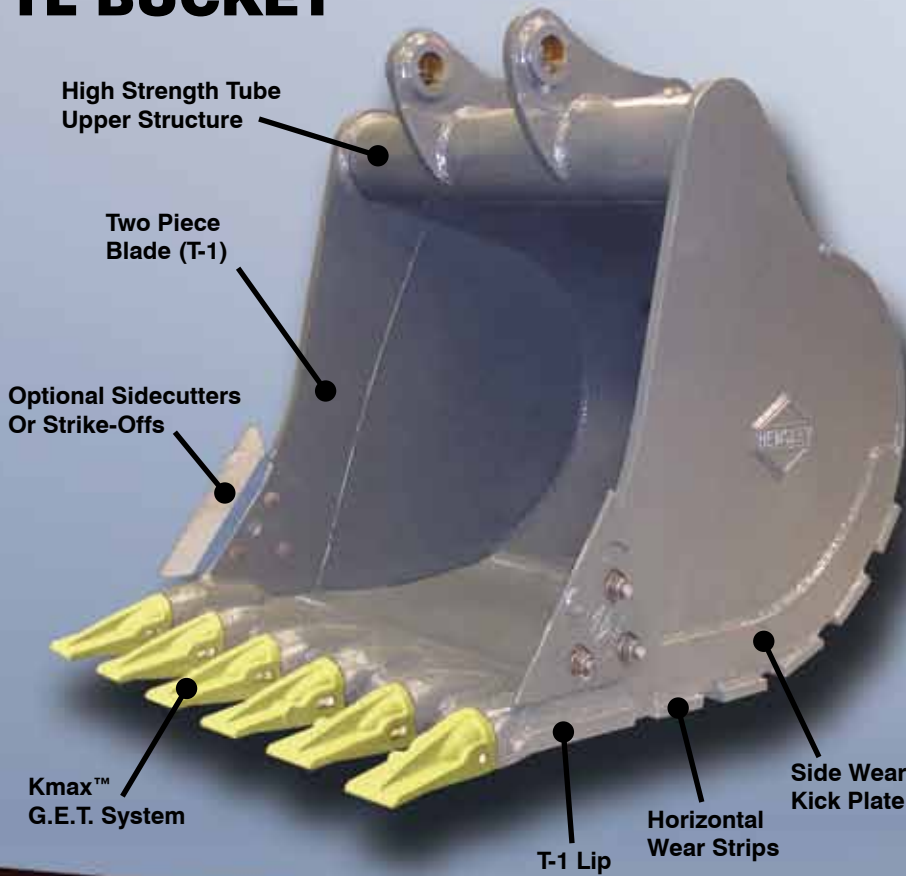


**HP  
Series  
Buckets**



**Custom HPS  
Bucket Shown**

# TL BUCKET



## TL BUCKET

### STANDARD FEATURES:

- TL Profile For Trenching & Loading Applications
- High Strength Tube Upper Structure
- Two Piece Blade (T1)
- Flat Bottom Contour Design
- Horizontal Wear Strips On Bottom And Side Wear Kick Plate
- Optional Sidecutters, Strike-Offs Or Weld-On Vertical Edge Protectors Available

### RECOMMENDED APPLICATIONS:

Dirt, Loam, Sand, Gravel, Loose Clay, Abrasive Soils With Limited Rock Mixture.

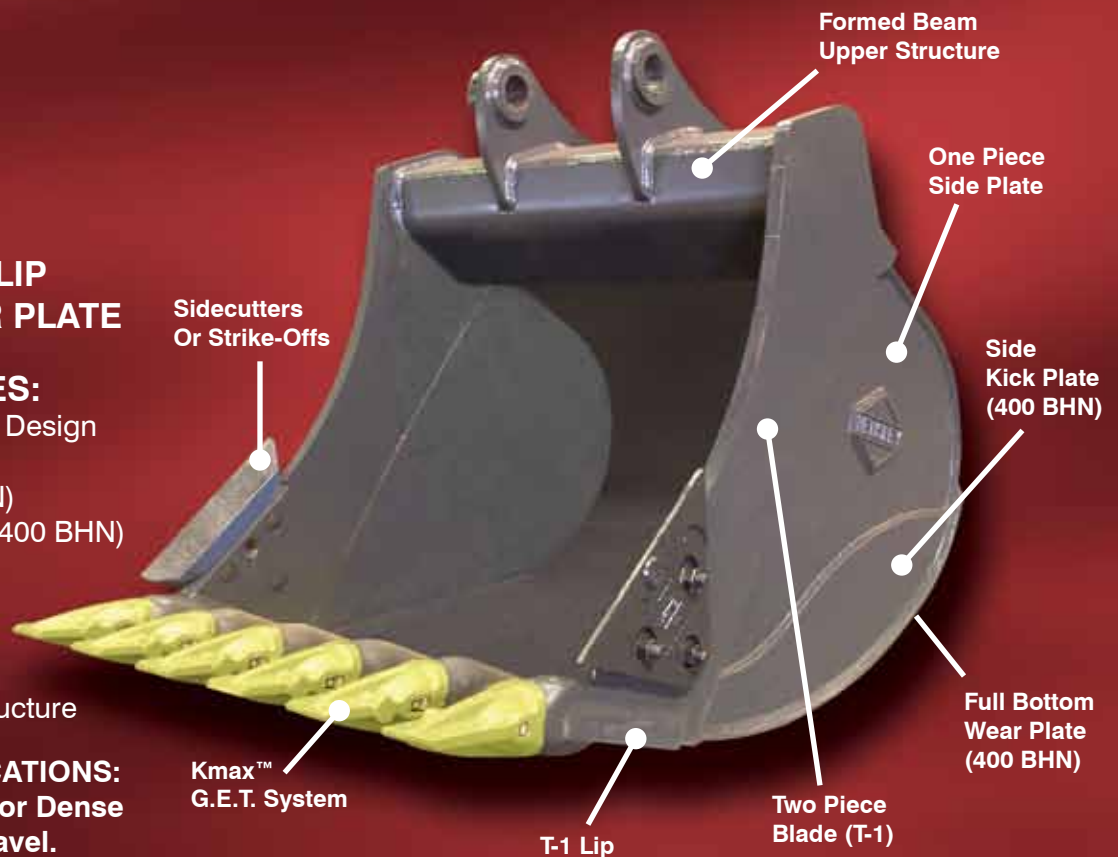
# HP BUCKET

## HEAVY DUTY PLATE LIP BUCKET WITH WEAR PLATE

### STANDARD FEATURES:

- Dual Taper / Dual Radius Design
- One Piece Blade (T-1)
- Side Kick Plate (400 BHN)
- Full Bottom Wear Plate (400 BHN)
- One Piece Side Plate
- Hook Plate with Lift Eye
- Strike Off Assemblies
- Lip (T-1)
- Formed Beam Upper Structure

**RECOMMENDED APPLICATIONS:**  
Abrasive Soils, Compact or Dense Clay, Loose Rock and Gravel.



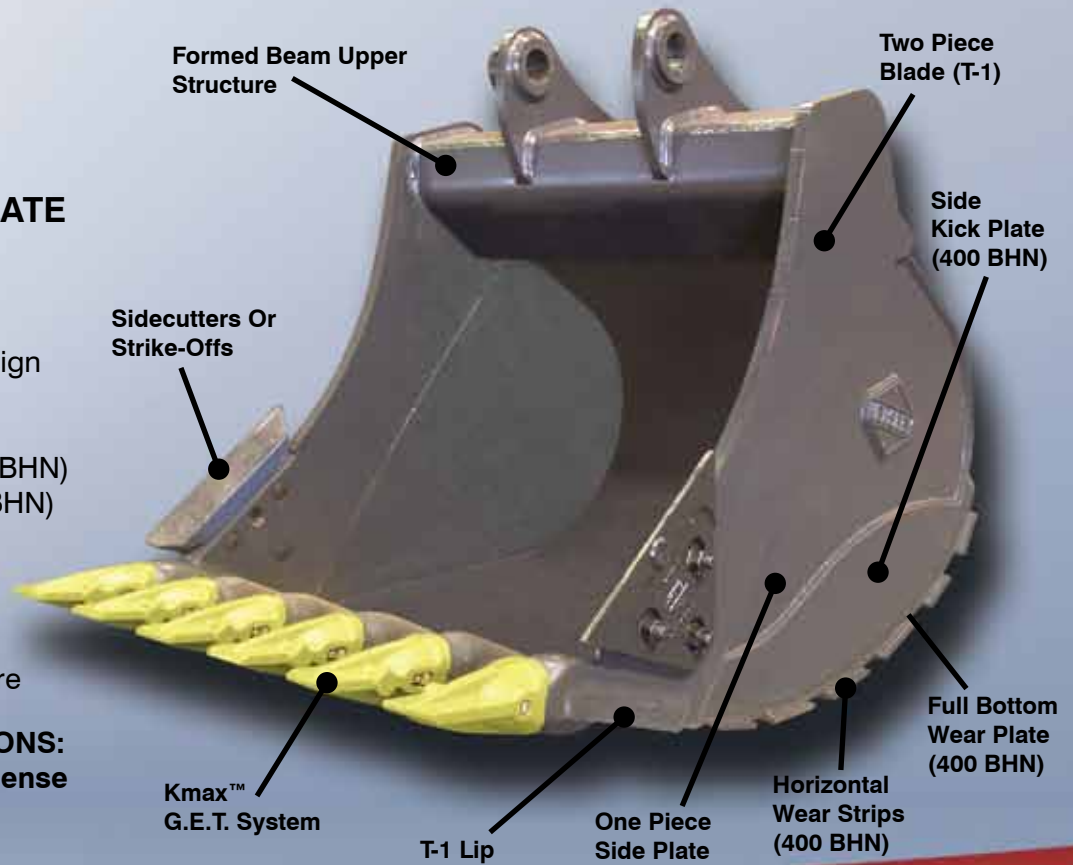
# HPS BUCKET

## HEAVY DUTY PLATE LIP BUCKET WITH WEAR PLATE AND WEAR STRIPS

### STANDARD FEATURES:

- Dual Taper / Dual Radius Design
- One Piece Blade (T-1)
- Side Kick Plate (400 BHN)
- Full Bottom Wear Plate (400 BHN)
- Horizontal Wear Strips (400 BHN)
- One Piece Side Plate
- Hook Plate with Lift Eye
- Strike Off Assemblies
- Lip (T-1)
- Formed Beam Upper Structure

**RECOMMENDED APPLICATIONS:**  
Abrasive Soils, Compact or Dense Clay, Loose Rock and Gravel.



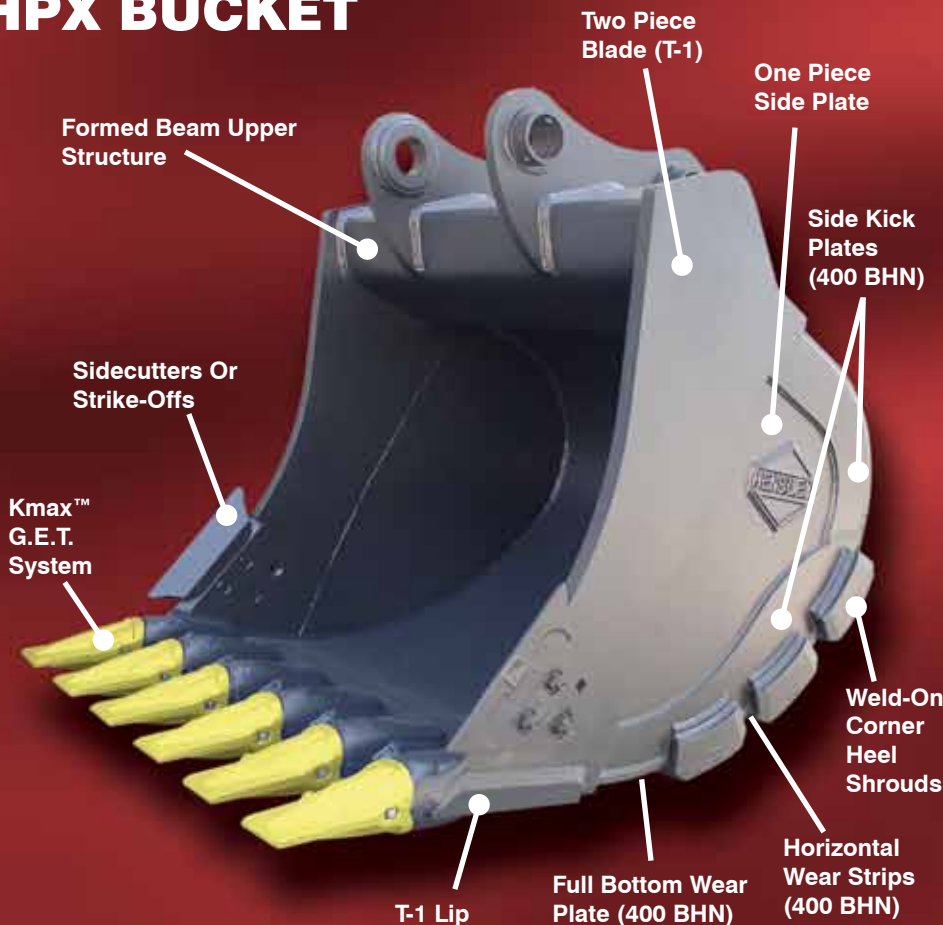
# HPX BUCKET

## EXTREME DUTY PLATE LIP BUCKET WITH SPECIAL FEATURES

### STANDARD FEATURES:

- Dual Taper / Dual Radius Design
- One Piece Blade (T-1)
- Upper and Lower Side Kick Plate (400 BHN)
- Full Bottom Wear Plate (400 BHN)
- Horizontal Wear Strips (400 BHN)
- One Piece Side Plate
- Hook Plate with Lift Eye
- Strike Off Assemblies
- Lip (T-1)
- Formed Beam Upper Structure
- Increased Material Thicknesses in High Wear Areas
- Cast Heel Wear Shrouds
- \*\* Optional Laminite® Wear Resistant Products

**RECOMMENDED APPLICATIONS:**  
Shot Rock, Stratified Materials, Quarry or Tough, Highly Abrasive Applications.



# SPECIALITY BUCKETS

**The Original  
"V" Bucket**



**STANDARD FEATURES:**

- Original "V" bottom bucket design
- Blade (T1)
- Specially designed teeth and adapters to improve digging performance
- "V" bottom design, ideal for utility work

**Recommended Applications:**

Limestone, caliche type materials, fracturable materials, soils compacted by deep frost.

**Round Bottom Bucket**



**STANDARD FEATURES:**

- Original round bottom bucket design
- Blade (T1)
- Specially designed teeth and adapters to improve digging performance
- Round bottom design, ideal for utility work, laying of pipe 36" or larger

**Recommended Applications:**

Limestone, caliche type materials, fracturable materials, soils compacted by deep frost.

**Coal Bucket**



**STANDARD FEATURES:**

- Replaceable teeth mounted side by side to create a serrated edge.

**Recommended Applications:**

Coal stripping

**Ditch Cleaning Bucket**



**STANDARD FEATURES:**

- Wide cut, shallow design basket,
  - T-1 lip, bottom wear strips
- \*\*Optional bolt on edge

**Recommended Applications:**

Ditch cleaning, loam and sand

# BUCKET PROTECTION & ACCESSORIES

## BOX RIPPERS

Break up dense material without removing your excavator bucket. Hensley Box Ripper Systems are available for excavators with operating weights from 20,000 lb. - 169,000 lb.



## THUMBS

Hydraulic & mechanical thumbs in weld-on, main pin and progressive link styles. Custom coupler compatible units are also available. For 120 through 400 class machines.



## Series II Auto-Lock Couplers for PC120 through PC400

## QUICK COUPLERS

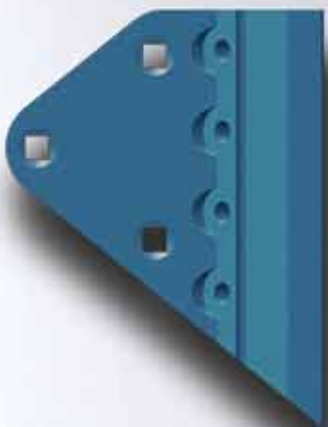
Designed with a self-locking system for easy change-outs.

Available in mechanical and hydraulic versions. Mount multiple types of attachments quickly and safely. For 120 through 400 class machines.



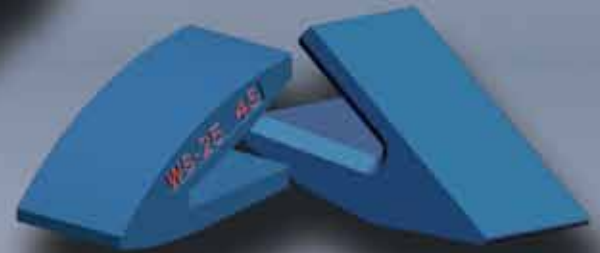
## WELD-ON BUCKET HEEL SHROUDS

Designed to protect high wear areas, such as the corner edges on excavator, loader, face shovel and LHD scoop tram buckets. These cast shrouds will provide superior wear protection extending the life of your equipment.



## SIDECUTTERS/ STRIKE-OFFS

Sidecutters protect the side plates of the bucket while adding additional cutting width to the bucket. Some sidecutters can accept combination plates for even greater increased cutting width. Strike-offs provide protection to the side plates of the bucket and cuts the same width as the bucket.



## WELD-ON LIP SHROUDS

Designed to protect the lip of the bucket.



## LAMINITE®

Designed to protect your equipment from impact and high abrasion damage. Laminite® is easily weldable with minimal preparation, and is available in standard sizes and styles.

# KMAX™

## G.E.T. SYSTEMS

Newly designed adapter nose and tooth pocket create a tight tooth-to-adapter fit for extended life.

RC style tooth  
(other styles available)

Reusable  
Fastener

Teeth are reversible.

### EASY 3-STEP INSTALLATION/REMOVAL!

#### STEP 1.

Observing proper safety procedures, place tooth onto nose



#### STEP 2.

Insert fastener, making sure it is in the unlocked position, as shown.

tip of  
tooth



#### STEP 3.

Using the correct sized socket, rotate the pin locking shaft 90° clockwise (as shown) to finish installation.



#### TOOTH REMOVAL

To remove fastener, use the correct sized socket to rotate the pin locking shaft 90° counter-clockwise (as shown). Remove tooth and pin and repeat steps 1-3 for a new installation.





# Kmax™ System Benefits

- Exclusive for Komatsu Dealers
- Designed for virtually any application.
- Change teeth in minutes.
- Several tooth styles available.
- Reusable fastener.
- Low throw away ratio.
- Superior heat treating and through hardness.



**FLARE**



**SYL**



**TWIN  
TIGER**



**UT TWIN  
TIGER**



**TIGER**



**TV  
TIGER**



# BUCKET APPLICATIONS

	TL				HP			
12 CLASS	Cut	Cap C.Y.	# of Teeth	WT	Cut	Cap C.Y.	# of Teeth	WT
PC128UU-2 PC120LC-6 PC138USLC-8	18	0.34	3	748	18	0.34	3	836
	24	0.50	4	890	24	0.50	4	1,007
	30	0.67	4	1110	30	0.67	4	1,140
	36	0.83	5	1141	36	0.83	5	1,303
	42	1.00	6	1278	42	1.00	6	1,464
	48	1.17	6	1393	48	1.17	6	1,597
15 CLASS								
PC160LC-7	20	0.48	3	989	20	0.48	3	1,126
	24	0.61	4	1116	24	0.61	4	1,260
	30	0.81	4	1252	30	0.81	4	1,431
	36	1.02	5	1454	36	1.02	5	1,620
	42	1.24	5	1554	42	1.24	5	1,776
	48	1.45	6	1720	48	1.45	6	1,966
20 CLASS								
PC200LC-8 PC228USLC-3	24	0.66	4	1334	24	0.66	4	1,437
	30	0.88	4	1518	30	0.88	4	1,681
	36	1.11	5	1719	36	1.11	5	1,913
	42	1.34	5	1890	42	1.34	5	2,095
	48	1.57	6	2092	48	1.57	5*	2,349
	54	1.80	6	2263	54	1.80	6	2,512
25 CLASS								
PC220LC-8 PC270LC-8 PC308USLC-3	24	0.76	3	1514	24	0.76	3	1,791
	30	1.02	4	1779	30	1.02	4	2,053
	36	1.29	5	2000	36	1.29	5	2,323
	42	1.57	5	2178	42	1.57	5	2,545
	48	1.85	6	2399	48	1.85	5*	2,817
	54	2.13	6	2576	54	2.13	6	3,095
	60	N/A			60	2.41	7	3,312
30 CLASS								
PC300LC-7 PC300HD-7 PC300LC-8 PC300HD-8	24	0.89	3	2101	24	0.89	3	2,254
	30	1.21	4	2383	30	1.21	4	2,598
	36	1.54	4	2606	36	1.54	4	2,993
	42	1.88	5	2885	42	1.88	5	3,173
	48	2.22	5	3108	48	2.22	5	3,429
	54	2.56	6	3388	54	2.56	6	3,750
	60	2.91	6	3610	60	2.91	6	4,007
40 CLASS								
PC400LC-7 PC400LC-8	30	1.47	3	2857	30	1.47	3	3,324
	36	1.76	4	3220	36	1.76	4	3,667
	42	2.15	4	3532	42	2.15	4	4,046
	48	2.54	5	3823	48	2.54	5	4,360
	54	2.94	6	4161	54	2.94	6	4,741
	60	3.34	6	4426	60	3.34	6	5,056
	66	3.75	7	4764	66	3.75	7	5,437
	72	4.15	7	5030	72	4.15	7	5,752



\*6 tooth configuration optional

# BUCKET APPLICATIONS

	HPS				HPX			
12 CLASS	Cut	Cap C.Y.	# of Teeth	WT	Cut	Cap C.Y.	# of Teeth	WT
PC128UU-2 PC120LC-6 PC138USLC-8	18	0.34	3	895	N/A			
	24	0.50	4	1,086				
	30	0.67	4	1,240				
	36	0.83	5	1,423				
	42	1.00	6	1,605				
	48	1.17	6	1,758				
15 CLASS								
PC160LC-7	20	0.48	3	1,241	N/A			
	24	0.61	4	1,400				
	30	0.81	4	1,607				
	36	1.02	5	1,833				
	42	1.24	5	2,027				
	48	1.45	6	2,253				
20 CLASS								
PC200LC-8 PC228USLC-3	24	0.66	4	1,597	24	0.66	4	1,817
	30	0.88	4	1,851	30	0.88	4	2,071
	36	1.11	5	2,120	36	1.11	5	2,340
	42	1.34	5	2,339	42	1.34	5	2,559
	48	1.57	6	2,630	48	1.57	5*	2,850
	54	1.80	6	2,829	54	1.80	6	3,049
25 CLASS								
PC220LC-8 PC270LC-8 PC308USLC-3	24	0.76	3	1,917	24	0.76	3	2,177
	30	1.02	4	2,248	30	1.02	4	2,508
	36	1.29	5	2,562	36	1.29	5	2,822
	42	1.57	5	2,827	42	1.57	5	3,087
	48	1.85	6	3,142	48	1.85	5*	3,402
	54	2.13	6	3,464	54	2.13	6	3,724
	60	2.41	7	3,724	60	2.41	7	3,984
30 CLASS								
PC300LC-7 PC300HD-7 PC300LC-8 PC300HD-8	24	0.89	3	2,451	24	0.89	3	2,731
	30	1.21	4	2,853	30	1.21	4	3,133
	36	1.54	4	3,167	36	1.54	4	3,447
	42	1.88	5	3,543	42	1.88	5	3,823
	48	2.22	5	3,857	48	2.22	5	4,137
	54	2.56	6	4,236	54	2.56	6	4,516
	60	2.91	6	4,550	60	2.91	6	4,830
40 CLASS								
PC400LC-7 PC400LC-8	30	1.47	3	3,597	30	1.47	3	3,877
	36	1.76	4	3,981	36	1.76	4	4,261
	42	2.15	4	4,416	42	2.15	4	4,696
	48	2.54	5	4,789	48	2.54	5	5,069
	54	2.94	6	5,228	54	2.94	6	5,508
	60	3.34	6	5,600	60	3.34	6	5,880
	66	3.75	7	6,039	66	3.75	7	6,319
	72	4.15	7	6,412	72	4.15	7	6,412



**HPS**

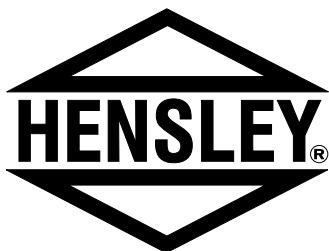


**HPX**

\*6 tooth configuration optional



**SAFETY FIRST:** Hensley recommends that you use a soft-faced hammer and ANSI-approved (Z87.1) eye protection while using our products.



**Hensley Industries, Inc.**  
2108 Joe Field Road • Dallas, Texas  
75229 U.S.A.

**Customer Service**  
(888) 406 - 6262 U.S./Canada  
(972) 406 - 6262 all other locations

**Hensley Attachments**  
A Division of Hensley Industries, Inc.  
800 South Fifth Avenue • Mansfield, Texas  
76063 U.S.A.

(800) 433 - 3144  
(817) 477 - 3167

[www.hensley-komatsu.com](http://www.hensley-komatsu.com)



Copyright © 2011 Hensley Industries, Inc.

This publication is protected under the copyright laws of the United States. Unauthorized duplication or distribution is prohibited.